



Donaldson
FILTRATION SOLUTIONS

P-PT

**INDUSTRIAL STAINLESS
STEEL FILTER HOUSINGS**

Process Filtration

Industrial stainless steel filter housings for water and corrosive liquids.

Donaldson® P-PT single round filter housings are designed for industrial applications that require 316 SS construction. The single nut closure provides a positive radial seal and easy element replacement. The T-style in-line orientation allows for easy installation.

Available in NPT, Flange, Tri-Clamp®* and welded end connection types.

Standard housings are built to accept Code 7 and 2 elements. Housings are also available in DOE, Code 3 and Code 8 filter elements.

A broad selection of filter elements are available to meet the compatibility and micron rating requirements of your process.



P-PT

APPLICATIONS

- Petrochemicals
- Solvents
- Process water
- Potable liquids
- Coolants
- Industrial water

SPECIFICATIONS

| MATERIALS ¹ | |
|------------------------|---|
| Filter Head | 316L SS |
| Sealing Nut | Nickle plated brass |
| Filter Bowl | 316L SS |
| Housing Gasket | EPDM (also available in Viton®*, Buna and silicone) |

| DESIGN PRESSURE AND TEMPERATURE | |
|--------------------------------------|-----------------|
| NPT | 300 psi @ 200°F |
| Flange, Tri-Clamp®**, and Welded End | 150 psi @ 200°F |

* Viton is a registered trademark of DuPont PerformanceElastomers L.L.C.
** Tri-Clamp is a registered trademark of Ladish Company.

¹DOE housings are also available in 304/Brass.
Contact your Donaldson Representative for alternative material options.

SPECIFICATIONS

| SURFACE FINISH | |
|--|--|
| CODE 2, 7, 3, 8 HOUSINGS | DOE HOUSINGS |
| Filter head - Bead blast, cast stainless steel | Filter head - Bead blast, cast stainless steel |
| Filter bowl - Industrial electropolished | Filter bowl - Polished |

| ELEMENTS |
|--|
| Standard in Code 7/Code 2 connection. Contact your Donaldson Representative for Code 3 and Code 8 elements. DOE housing designs are also available upon request. |

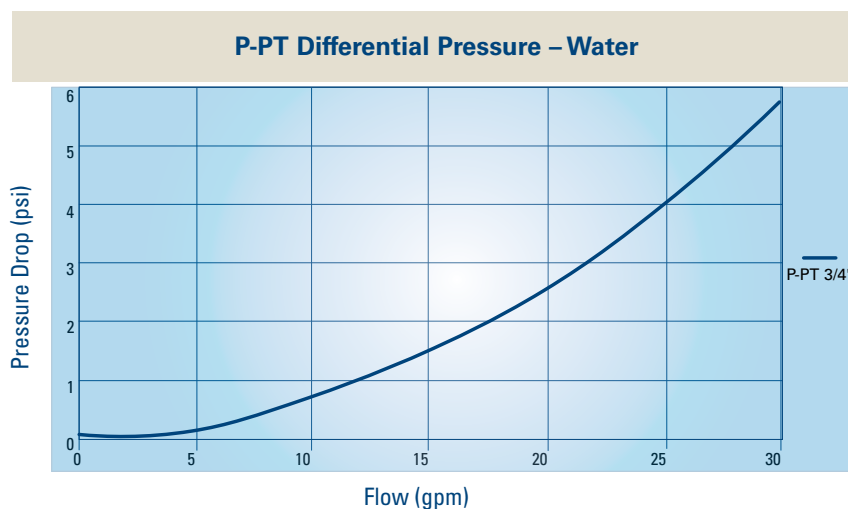
| DESIGN PRESSURE AND TEMPERATURE | |
|-----------------------------------|-----------------|
| NPT | 300 psi @ 200°F |
| Flange, Tri-Clamp, and Welded End | 300 psi @ 200°F |

| CONNECTION TYPES | |
|--------------------------|---|
| CODE 2, 7, 3, 8 HOUSINGS | DOE HOUSINGS |
| 3/4" and 1" NPT | 3/4", 1/2" and 1" NPT, 1" Flange, 1" Tri-Clamp® |
| 1" Flange | 1" Flange |
| 1" Tri-Clamp® | 1" Tri-Clamp |
| 1" Welded End | |

| DRAIN | |
|--------------------------|-----------------------|
| CODE 2, 7, 3, 8 HOUSINGS | DOE HOUSINGS |
| 1/4" NPT drain w/plug | 1/8" NPT drain w/plug |

| INLET AND OUTLET GAUGE PORTS |
|--------------------------------|
| 1/4" FNPT gauge ports, plugged |

| ACCESSORIES INCLUDED |
|---|
| Nut closure tool and mounting brackets are included with the housing. |



NPT Housings – 316L SS

| Model Number | Capacity (gpm) | Connection (FNPT) | Dimensions (inches) | | | | Approx. Weight w/o Element (lbs) | Element | |
|--------------|----------------|-------------------|---------------------|---------|----------|---------|----------------------------------|---------|-----|
| | | | Code 2, 7, 3, 8 | | DOE | | | Size | Qty |
| | | | Height A | Width B | Height A | Width B | | | |
| P-PT 0007 | 7 | 3/4" | 17.4 | 3.5 | 13.6 | 3.5 | 7 | 10/30 | 1 |
| P-PT 0007 | 7 | 1" | 17.4 | 3.5 | 13.6 | 3.5 | 7 | 10/30 | 1 |
| P-PT 0014 | 14 | 3/4" | 27.4 | 3.5 | 23.6 | 3.5 | 9 | 20/30 | 1 |
| P-PT 0014 | 14 | 1" | 27.4 | 3.5 | 23.6 | 3.5 | 9 | 20/30 | 1 |
| P-PT 0021 | 21 | 3/4" | 37.4 | 3.5 | 33.6 | 3.5 | 12 | 30/30 | 1 |
| P-PT 0021 | 21 | 1" | 37.4 | 3.5 | 33.6 | 3.5 | 12 | 30/30 | 1 |

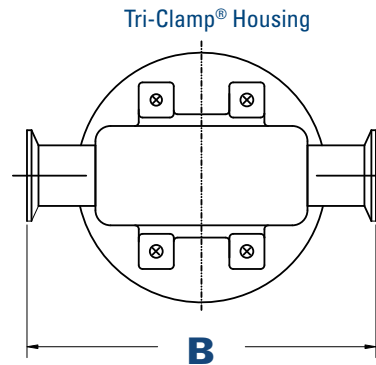
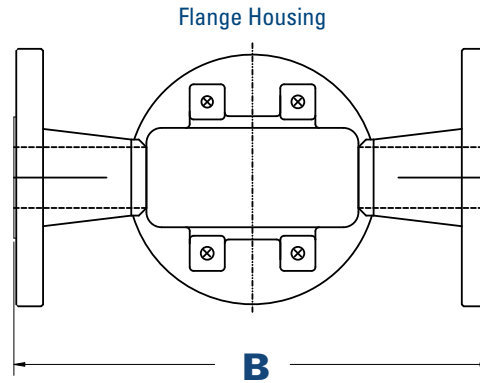
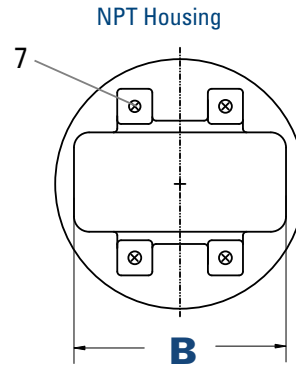
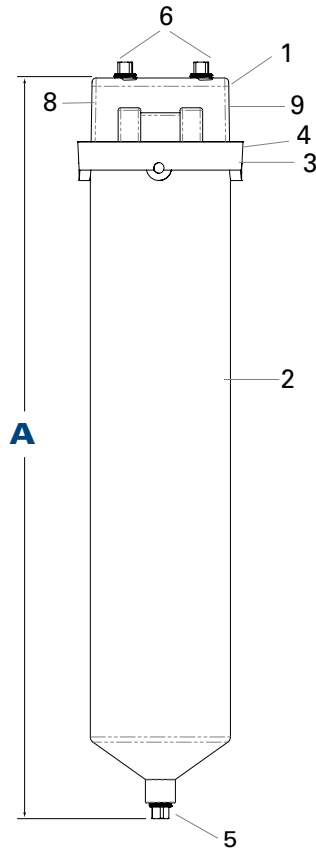
Flange Housings – 316L SS

| Model Number | Capacity (gpm) | Connection (FNPT) | Dimensions (inches) | | | | Approx. Weight w/o Element (lbs) | Element | |
|--------------|----------------|-------------------|---------------------|---------|----------|---------|----------------------------------|---------|-----|
| | | | Code 2, 7, 3, 8 | | DOE | | | Size | Qty |
| | | | Height A | Width B | Height A | Width B | | | |
| P-PT 0007 | 7 | 1" | 27.4 | 7.8 | 23.6 | 7.9 | 11 | 10/30 | 1 |
| P-PT 0014 | 14 | 1" | 27.4 | 7.8 | 23.6 | 7.9 | 13 | 20/30 | 1 |
| P-PT 0021 | 21 | 1" | 37.4 | 7.8 | 33.6 | 7.9 | 16 | 30/30 | 1 |

Tri-Clamp® Housings – 316L SS

| Model Number | Capacity (gpm) | Connection (FNPT) | Dimensions (inches) | | | | Approx. Weight w/o Element (lbs) | Element | |
|--------------|----------------|-------------------|---------------------|---------|----------|---------|----------------------------------|---------|-----|
| | | | Code 2, 7, 3, 8 | | DOE | | | Size | Qty |
| | | | Height A | Width B | Height A | Width B | | | |
| P-PT 0007 | 7 | 1" | 17.4 | 5.7 | 13.6 | 5.7 | 8 | 10/30 | 1 |
| P-PT 0014 | 14 | 1" | 27.4 | 5.7 | 23.6 | 5.7 | 10 | 20/30 | 1 |
| P-PT 0021 | 21 | 1" | 37.4 | 5.7 | 33.6 | 5.7 | 13 | 30/30 | 1 |

DIMENSIONS



| No. | Description |
|-----|--|
| 1 | Head |
| 2 | Bowl |
| 3 | Locking ring |
| 4 | Housing gasket |
| 5 | Drain |
| 6 | Gauge port |
| 7 | Mounting holes (1/4" - 20 x 3/8" deep) |
| 8 | Inlet |
| 9 | Outlet |



Important Notice

Many factors beyond the control of Donaldson can affect the use and performance of Donaldson products in a particular application, including the conditions under which the product is used. Since these factors are uniquely within the user's knowledge and control, it is essential the user evaluate the products to determine whether the product is fit for the particular purpose and suitable for the user's application. All products, specifications, availability and data are subject to change without notice, and may vary by region or country.



Donaldson Company, Inc.
Minneapolis, MN

donaldson.com
shop.donaldson.com

Australasia 61-02-4350-2066
marketing.australia@donaldson.com

Brazil 55-11-4894-6035
vendas.brasil@donaldson.com

China 86-400-921-7032
info.cn@donaldson.com

EMEA 49-2129-569-0
cap-europe@donaldson.com

India 91-124-4807-400
indiaenquiries@donaldson.com

Japan 81-42-540-4123
ndl-ultrafilter-web@donaldson.com

Korea 82-2-517-3333
cap-kr@donaldson.com

Latin America 52-449-300-2442
industrialair@donaldson.com

North America 800-543-3634
processfilters@donaldson.com

South Africa 27-11-997-6000
samarketing@donaldson.com

Southeast Asia 65-6311-7373
sea.salesenquiry@donaldson.com

F117006 ENG (02/19) P-PT Industrial Stainless Steel Filter Housings

© 2015 Donaldson Co., Inc. All Rights Reserved. Donaldson and the color blue are marks of Donaldson Company, Inc. All other marks belong to their respective owners.

{Contains Donaldson proprietary technology.}