

The ASEPCO Radial-Diaphragm™ Sample Valve

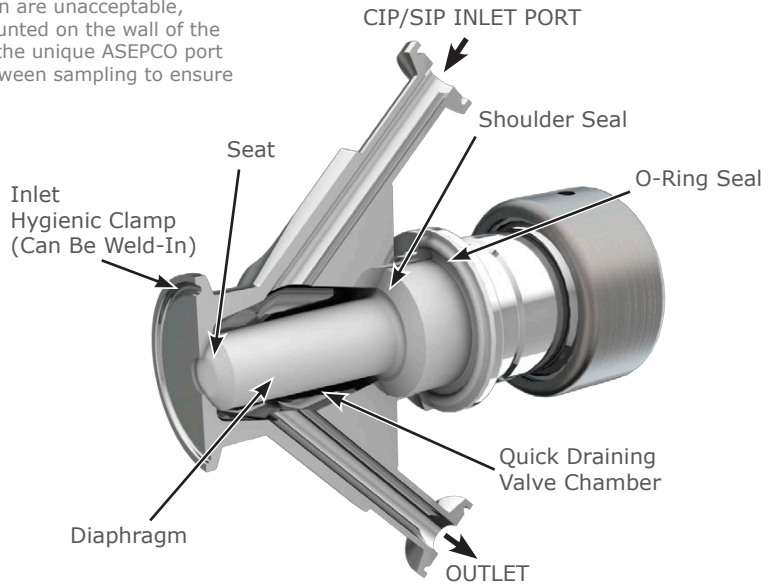


Designed for Critical Aseptic Processing Applications

ASEPCO radial-diaphragm valves are specifically designed for applications where leakage, dead legs, and cross-contamination are unacceptable, just like ASEPCO's original Tank-Bottom Valve. Mounted on the wall of the vessel just above the *knuckle*, it is equipped with the unique ASEPCO port that allows through-the-chamber CIP/SIP flow between sampling to ensure a truly representative sample every time.

Features

- Through chamber CIP/SIP
- Radial-diaphragm
- Mounted on wall of vessel just above knuckle
- Simple clamp assembly
- Change diaphragms in seconds
- Integral travel stops
- Patented shoulder seal
- Behind the seat flow path



Specifications

Valves

Material	316L, AL6XN, Hastelloy Machined from solid, hot-rolled, bar stock
Surface Finish	Max 20 micro-inch Ra (0.5 µm Ra), Electropolished Max 15 micro-inch Ra (0.375 µm Ra), Electropolished Max 10 micro-inch Ra (0.25 µm Ra), Electropolished
Mounting Sizes	1" - 3" Clamp or Weld-in
Inlet Size	1/2"
CIP/SIP Port/Outlet Connections	Standard: 1/2" Hygienic clamp, 1/2" tube end (others available)
Maximum Pressure	250 psi
Maximum Temperature	135°C/275°F
Marking	Each valve is serialized and marked for full material traceability
ISO	All product and procedures are governed by our ISO Quality Assurance Program
Standards	BPE, CE-PED, ASME

Actuators

Types	Manual or compact pneumatic Fail open or closed
Material	304 stainless steel housing, can be made in 316L
Size	1/2"
Operating Air Pressure	100psi max for Pneumatic Actuators
Seals	Teflon bushings and o-rings
Fitting	1/8" NPT air connection (for pneumatic)
Possible Instrumentation	Switched With or without solenoids With or without DeviceNet cards

Diaphragms

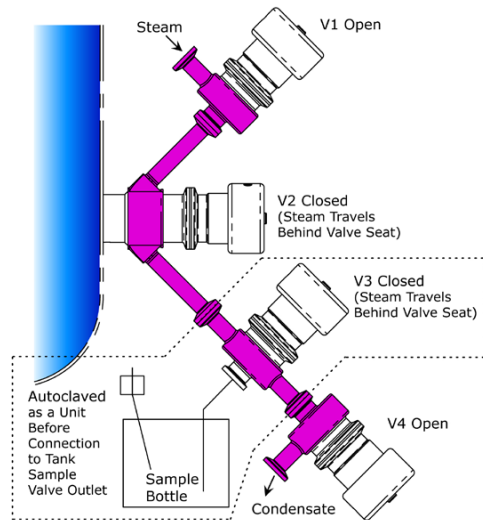
Materials	Silicone	Silicone Plus	EPDM	EPDM Plus	Viton
Temperature Range	-60 to 275°F	-60 to 275°F	-30 to 275°F	-30 to 275°F	-4 to 400°F
Class	USP Class VI, 21 CFR 177.2600	USP Class VI, 21 CFR 177.2600	USP Class VI, 21 CFR 177.2600	USP Class VI, 21 CFR 177.2600	USP Class VI, 21 CFR 177.2600
Parylene Treatment	-	√	-	√	-

Please contact our Customer Service Department for any non-standard valve requirement (800) 882-3886.

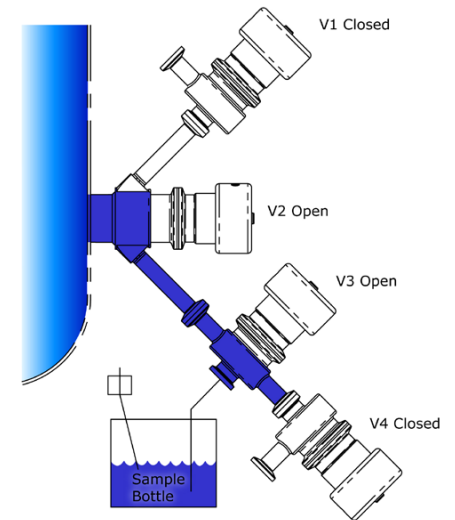
ASEPCO Tank Sampling

With "behind the seat" cleaning our valve system allows contamination-free sampling as depicted in the graphics at right.

Decontamination Flowpath (Pre or Post Sample)



Sample Flowpath



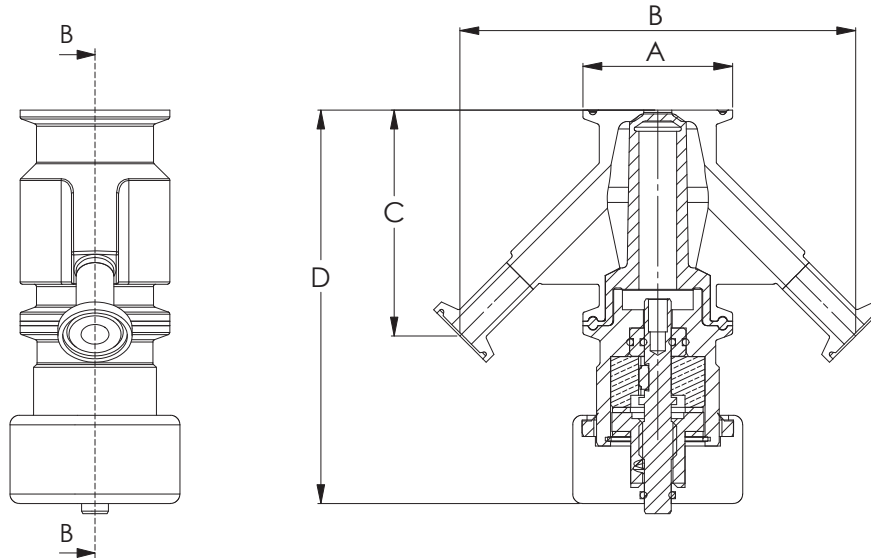
Sample Valve Dimensions, Flow Rates, and Weights Specifications

Sample Valve Flow Rates

Size inches	Cv at 1 psi (0.07 bar) GPM (LPM)
0.50	1.23 (4.66)

Weights

Size inches	Valve Body lb (Kg)	Total Weight with Manual Actuator lb (Kg)	Total Weight with Pneumatic Actuator lb (Kg)
0.50	1.5 (0.68)	4.3 (1.95)	4.0 (1.82)



SC/SW Sample Valve Dimensions

Size inches	A	B	C	D - with Manual Actuator	D - with Pneumatic Actuator
0.50 Weld-in	1.55 (39.37)	5.25 (133.35)	2.99 (75.95)	5.21 (132.33)	6.04 (153.42)
1.50 Clamp style	1.98 (50.29)	5.25 (133.35)	2.99 (75.95)	5.21 (132.33)	6.04 (153.42)
2.00 Clamp style	2.52 (64.01)	5.25 (133.35)	2.99 (75.95)	5.21 (132.33)	6.04 (153.42)
3.00 Clamp style	3.58 (91.00)	5.25 (133.35)	2.99 (75.95)	5.21 (132.33)	6.04 (153.42)

Dimensions are in inches (mm).